

  
**PROMINENCE**  
ESTATES



**RESIDENTIAL**  
PROPERTY EXPERTS

COVENTRY, WARWICKSHIRE  
& LEAMINGTON SPA

**THE MOORINGS,**  
CITY CENTRE, COVENTRY, CV1 4LR

**£2,200 PCM**

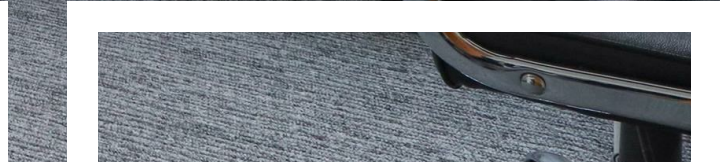
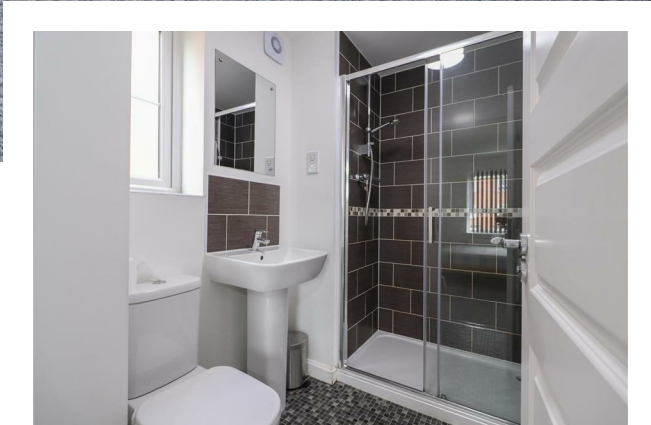
# THE MOORINGS

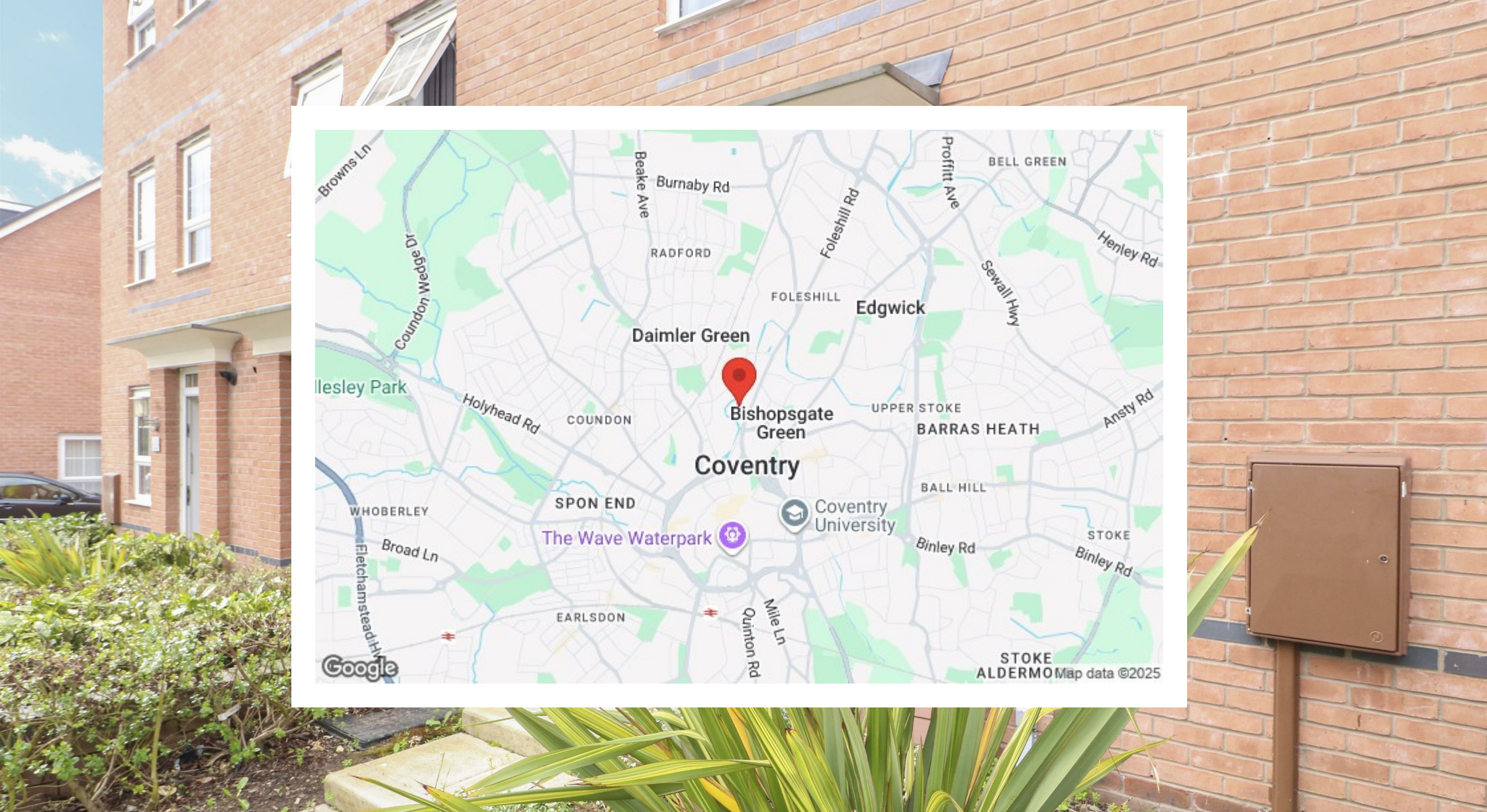


**PROMINENCE**  
ESTATES

**\*\* AVAILABLE SEPTEMBER 2026\*\*** **BILLS INCLUDED** Here we have an absolutely stunning house to rent with 4 large double bedrooms - 15 minutes walk to Coventry City Centre and within close proximity of the bus station. This amazing property benefits from off road parking with a secure garage which is a bonus when living near the City Centre. In brief the property comprises; entrance hallway, ground floor WC, study room, open plan kitchen/dining area and living room with doors leading out into the large well maintained garden. To the first floor there are 2 great sized double bedrooms with one bathroom to share and to the second floor another 2 double bedrooms and another shared bathroom.







Prominence Estates  
5 Queen Isabels Avenue,  
Cheylesmore,  
Coventry,  
CV3 5GE

02476 309 826  
lettings@prominenceestates.com  
www.prominenceestates.com

  
**PROMINENCE**  
ESTATES